

Museums and Points of Interest

FOSTER-SMITH LOG CABIN

Located across from the Chamber of Commerce office on S. Whitworth Avenue in Railroad Park. This charming log cabin was built in 1825 in Copiah County. Contact the Chamber of Commerce 601-833-1411 or 1-800-613-4667.

HISTORIC VICTORIAN DISTRICT

A self-guided walking or driving tour of the mansions on Mississippi's most Victorian street—South Jackson Street and surrounding area. Brochures available at the Brookhaven-Lincoln County Chamber of Commerce, 230 S. Whitworth Ave., M-F, 8am-5pm. 601-833-1411 or 1-800-613-4667.

HISTORIC WHITWORTH COLLEGE

110 S. Jackson St.—The campus touches three centuries of Mississippi history. The Mississippi School of the Arts (MSA) is now located on the campus which has been designated as a MS landmark and is also listed on the national register of historic places. Contact MSA-601-823-9256 or 1-866-672-7871.

HOMESEAKER'S PARADISE SIGN

Located at the intersection of W. Cherokee St. and S. Whitworth Ave. in downtown Brookhaven. Hundreds saw the original sign when the Liberty Bell passed enroute to Philadelphia after the 1915 San Francisco Exposition. It was donated to the war effort in 1943 and re-erected in November 1996.

LINCOLN COUNTY HISTORICAL AND JEWISH HERITAGE MUSEUM

Built in 1896 as the Temple B'Nai ShOlom the museum is located 227 S. Church St. (*Downtown district-2 blocks west of S. Whitworth Ave*) This museum features artifacts and history relevant to Lincoln County and rotating exhibits monthly. Open to the Public, Tues & Thurs/10am-2pm Appointments available for groups. Call 601-833-9023 or 601-822-7665.

MILITARY MEMORIAL MUSEUM

(Old Depot) 125 S. Whitworth Ave.-Roffie Burt—601-833-4489. Photos, artifacts and personal items of area veterans; Plus displays of military equipment dating back to WWI. Open to the Public Tuesday & Thursday /10am-2pm or by appointment

TAPESTRY OF CHRIST

First Baptist Church Sanctuary, Monticello Street. 601-833-5118-Kathy Smith. 22ft high by 24 ft wide hand-woven tapestry of Christ praying in the garden of Gethsemene.

BROOKHAVEN-LINCOLN COUNTY CHAMBER OF COMMERCE

P.O. Box 978

230 S. Whitworth Avenue

Brookhaven, MS 39602-0972

Phone: 601-833-1411 or 1-800-613-GO MS! (4667)

Email: info@brookhavenchamber.com

www.brookhavenchamber.org

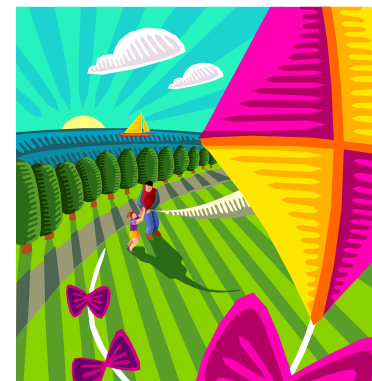
Visit us online @ www.brookhavenchamber.com



Updated October 2014

BROOKHAVEN-LINCOLN COUNTY CHAMBER OF COMMERCE

WHERE TO GO
AND
WHAT TO DO
in and around
Brookhaven, Mississippi



“HOMESEEKERS
PARADISE”

Tel: 601-833-1411

1-800-613-GO MS!(4667)

Visit us online @

www.brookhavenchamber.com



Parks & Recreation

ARD'S DAIRY FARM

3470 Orchard LN SE, Ruth, MS 39662. Family owned & operated Holstein dairy farm. Open to the Public every Saturday in October (November based on demand) for wagon rides, feeding baby cows, moo choo train rides, corn maze and lots of family farm fun. Wed-Sat nights flashlight mazes (call ahead) \$7 per person, ages 2 & under free. Family fun and birthday parties year-round by appointment and 3 bedroom guest house available for rental. Call Julie Ard @ 601-606-8418 for more info.

BICENTENNIAL PARK

601-833-3791 Main Street -State of the Art new playground equipment and spray park. Spray park open May1-Sept 30 /10am-7pm.

BOGUE CHITTO WATER PARK

601-684-9568 -Picnic area, cook-outs, open air pavilion, camp sites, RV's, 1 & 2 bedroom cabins. For tubing outside park and canoe rental, call these vendor numbers: Ryals 601-684-4948, Dogwood 684-9574 or Bogue Chitto Choo Choo 601-249-3788. Take South McComb exit, go east 14 miles on Hwy. 98.

BROOKHAVEN LITTLE THEATRE

126 W. Cherokee St.- 601-833-0068. Three productions presented each year with an annual membership party.

BROOKHAVEN RECREATION DEPT.

689 Hwy 51N 601-833-3791-Offers a variety of classes/activities/sports for all ages. Bridge Games- Held weekly . Monday-1:00p.m.-Rubber Bridge; Tuesday-7:00p.m.-Contract Duplicate Bridge; Friday-1:00p.m.-Contract Duplication. Refreshments—small fee.

BROOKHAVEN SKATING RINK

Calcote Drive -601-833-2829. Open Friday & Saturday, 6:30 p.m.— 10:00p.m.; Saturday Afternoon, 2 p.m.- 5:00 p.m. Private parties by appointment.

BROOKHILL ON NATCHEZ

605 Natchez Dr. NE-601-835-4347-Private tennis & swim club, playground equipment and walking track.

CITY PARK

Hartman Street. Tennis Courts, lighted, basketball courts, playground equipment, pavilion and spray park. 601-833-3791. Open Daily. Spray park Open May1-Sept 30 /10am-7pm.

EXCHANGE CLUB PARK -West Congress St. 601-833-5008/Baseball Fields: Legion Field and W.D. Lofton Field. Picnic and cook-out areas, as well as playground equipment for children. Open Daily.

HANSEL KING SPORTSPLEX

1134 Belt Line Rd NE (Industrial Park Road)- 601-833-1009 or 601-833-3791. Four Softball fields, three soccer fields.

Jump-N-Jive

524 Schwem Ave. 601-990-4065 Indoor bounce house, laser tag plus a party facility during off hours. Open jump—Fri & Sat, 10am-6pm; Sun, 1-4pm. Laser tag—Fri & Sat nights, 7-10pm. www.jump-n-jive.com

KIDS KINGDOM

Honey Creek Lane NE-Unique playground built by the citizens of Brookhaven. Play, picnic, learn and enjoy nature. Open Daily. Contact Brookhaven Recreation Department at 601-833-3791.

LINCOLN CIVIC CENTER

1096 Beltline Dr NE 601-823-9064 Features a multi-purpose bldg suitable for many types of functions and events, performance arena, stall barn & RV park.

LAKE LINCOLN STATE PARK

2573 Sunset Rd. NE 601-643-9044. Nature trails, water sports (boating, fishing, skiing and swimming), picnic, cook-outs, camping, RV sites, primitive camping & 1 cabin, restful!!!

MAGNOLIA DISC GOLF COURSE

Lake Lincoln State Park-2573 Sunset Rd. NE— 601-643-9044, 6 a.m. until dusk. 18 hole disc golf course, played with a flip of the wrist and not with a golf club. Small entrance fee to Park. Disc available for rent or sale.

MISSISSIPPI GYM OF DREAMS

327 Brookhaven Street-601-833-6451 Cheer, tumble, gymnastics instruction. Kids night out. Ages 5 and up.

MISSISSIPPI SCHOOL OF THE ARTS

308 W. Cherokee Street 601-823-1300. The only residential high school for the arts in the state where students receive academic classes and arts classes in selected disciplines of study, including: dance, Literary Arts, Theatre, Visual art & Vocal Music. MSA presents performances regularly & hosts exhibits that are free & open to the public. To tour the campus, contact the administrative office.

MT. ZION BIKE TRAIL

1160 Mt. Zion Rd-Johnny Smith-601-754-7785
Bike, hike, run or stroll under a canopy of trees on the manicured trail winding 8+ miles over bridges, thru creeks & around the pond. Listed as one of "BIKE" magazines top 10 trails in the Southeast USA in Nov. 2009 & hosts race #3 of the MS off-road cycling series the 1st weekend in May. **MZ Racing on Facebook.**

PUBLIC LIBRARY

100 South Jackson-601-833-3369 Hours:
M & W-9am-6pm, T & Th-9am-8pm, F & S-9am-5pm
Many youth activities planned during the summer months.

SKATE ZONE AND ARCADE

312 N. First St. 601-833-4205
Skating Rink, Arcade & Snack Bar
Friday 6:30-10 p.m., Saturday 1-5 p.m. & 7-11 p.m., Sunday 3-6 p.m.

WEST BROOK CINEMA

Brookway Boulevard-601-833-8888 MOVIES!!! 4 selections daily.

AREA GOLF COURSES

BROOKHAVEN COUNTRY CLUB - N. Jackson St. 601-833-6841-Semi-private club, 18 holes-par 70. Open 7 days a week-must call for tee time.

WOLF HOLLOW GOLF COURSE -Wesson, MS 601-643-8379 ; Approximately 9 miles north of Brookhaven -18 holes.

FERNWOOD COUNTRY CLUB - Fernwood, MS 601-684-6983 Approximately 25 miles south of Brookhaven— 18 holes.

QUAIL HOLLOW GOLF COURSE -Percy Quin State Park 2149 Camp Beaver Dr.; McComb MS 39648 684-2903 or 1-800-GOLF-MIS-18 holes.

ROLLING HILLS COUNTRY CLUB- 22145 Hwy. 51 S., Crystal Springs; Approximately 29 miles north of Brookhaven— 9 holes. 601-892-1621.



BROOKHAVEN-LINCOLN COUNTY CHAMBER OF COMMERCE

P.O. Box 978
230 S. Whitworth Avenue
Brookhaven, MS 39602-0972
Phone: 601-833-1411 or 1-800-613-GO MS! (4667)
Email: info@brookhavenchamber.com
www.brookhavenchamber.org